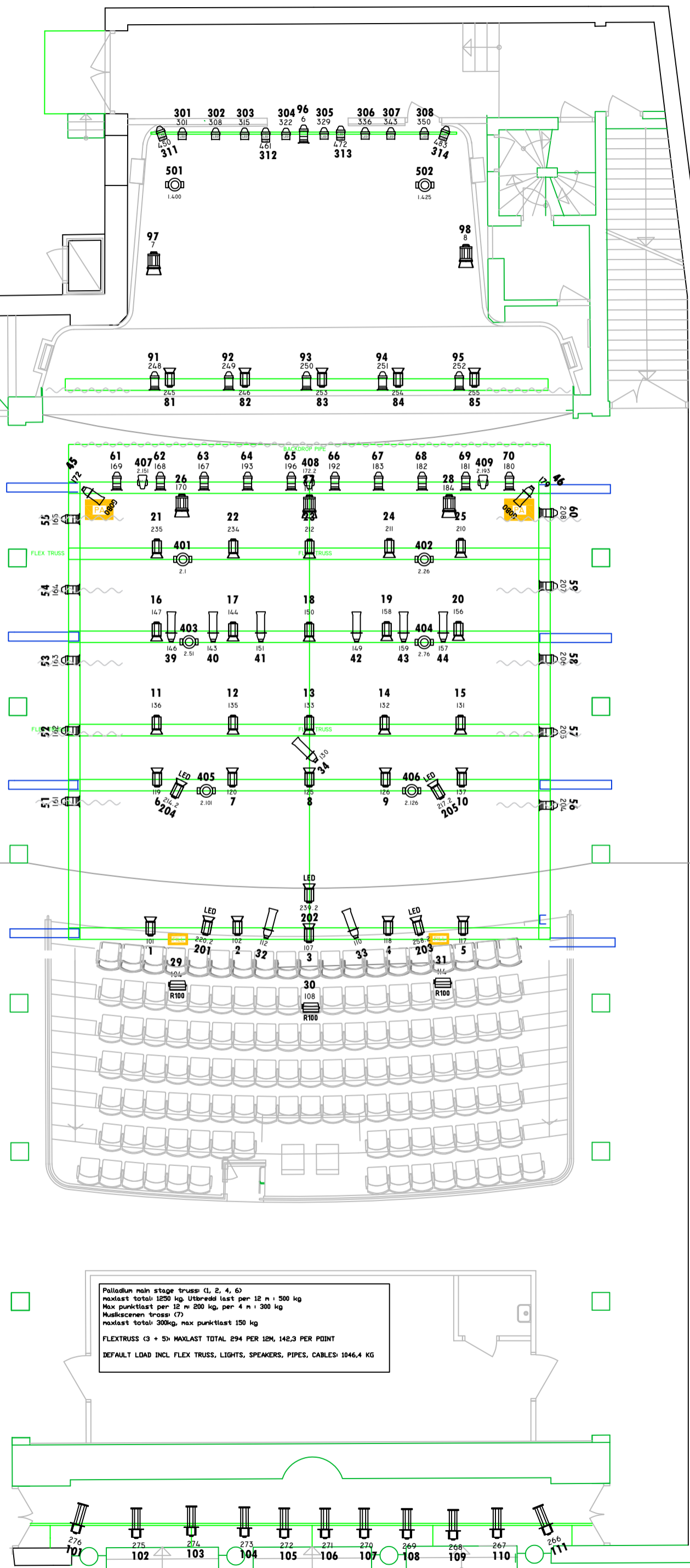


PALLADIUM MALMÖ

DANSSTATIONEN / MUSIK I SYD PRODUCTION
 FLOOR PLAN AND LIGHTING RIG / TRUSS
 SOUND: DANCE PA STAGE FILLS + FRONT. SUBS BACK
 FEBRUARI 2022



TRUSS 7: 107 KG (INCL. LIGHTS, CABLES, EXTRA PIPES)
 MAX PER 12M: 300 MAX C POINT 150 KG

BACKDROP PIPE MAX WEIGHT 220 KG
 BACKDROP: 76 RAIL AND FABR. CW: 9KG
 TOTAL BACKDROP: 156 (DEFAULT)
 BLACKPEARL: 45 KG (ADDED)

TRUSS 6: 173 KG (INCL. LIGHTS, CABLES, EXTRA PIPES)
 MAX PER 12M: 500 MAX C POINT 200 KG

TRUSS 5: 60,4 KG (INCL. LIGHTS, CABLES, EXTRA PIPES)
 MAX PER 12M: 294 KG, max c point: 142,3 kg

TRUSS 4: 124,2 KG (INCL. LIGHTS, CABLES, EXTRA PIPES)
 MAX PER 12M: 500 MAX C POINT 200 KG

TRUSS 3: 32,2 KG (INCL. LIGHTS, CABLES, EXTRA PIPES)
 MAX PER 12M: 294 KG, max c point: 142,3 kg

TRUSS 2: 90,9 KG (INCL. LIGHTS, CABLES, EXTRA PIPES)
 MAX PER 12M: 500 MAX C POINT 200 KG

TRUSS 1: 155,5 KG (INCL. LIGHTS, CABLES, EXTRA PIPES, speakers)

Speakers: 46 kg
 MAX PER 12M: 500 MAX C POINT 200 KG

TRUSS SIDES:
 LEFT SIDE (FROM AUD): 87,9 KG (INCL. LIGHTS, CABLES, EXTRA PIPES, LEGS)
 RIGHT SIDE (FROM AUD): 101,4 KG (INCL. LIGHTS, CABLES, EXTRA PIPES, LEGS)

CENTRE PIPE: 16 KG

WORK LIGHT CONSTRUCTION INCL PIPES AND LIGHTS: 135 KG

WEIGHTS:

CABLES:
 2M 0,5 KG
 5M 1 KG
 10M 1,5 KG
 15M 2 KG

MULTI:
 0,7 KG / M

DMX:
 25M 1 KG

SPEAKON:
 0,5 KG / M

ALURBÄR: 1 KG / M
 STALRBÄR: 2 KG / M

BYXA: 8 KG, BYXRÄR: 4 KG, 1 KNUTI: 1 KG
 (CHELA BYXRÄRET: 13 KG)

Palladium main stage truss: (1, 2, 4, 6)
 maxlast total: 1250 kg, Utbredd last per 12 m: 500 kg
 Max punktlast per 12 m: 200 kg, per 4 m: 300 kg
 Musikscenen truss: (7)
 maxlast total: 300kg, max punktlast: 150 kg
 FLEXTRUSS (3 + 5) MAXLAST TOTAL 294 PER 12M, 142,3 PER POINT
 DEFAULT LOAD INCL FLEX TRUSS, LIGHTS, SPEAKERS, PIPES, CABLES: 1046,4 KG

- SELECON FRESNEL 1KW, 4,6 KG
- MARTIN MAC AURA, 6 KG
- ETC SOURCE 4 15/30 750W, 10,6 KG
- ETC SOURCE 4 25/50 750W, 8,5 KG
- ADB ACPI001 ASYM FLOOD 1KW, 5 KG
- PAR 64 CP 62, 3 KG
- R&J 711SX 10/25 2KW

DMX PATCH:
 MAC AURA 401: 1.2, 402: 26.2, 403: 52.2
 404: 76.2, 405: 101.2, 406: 126.2
 501: 400.1, 502: 425.1
 SELECON LED FRES 601: 214.2, 602: 217.2
 CHAUVET LED FRES 603: 220.2, 604: 239.2
 605: 258.2